

# AN ALCOHOL AND OTHER DRUG DEPENDENCY TREATMENT PROGRAM FOR PEOPLE WHO DON'T NEED HOSPITALIZATION.

Periodically, informative lectures and groups may be offered to address such topics as the addictive process, signs and symptoms of abuse and addiction, family-related issues and parenting a chemical involved adolescent.

In addition to AODA services, the Counseling Care Center offers confidential mental health therapy provided by qualified staff members including psychiatrists, psychologists and master level social workers. Specialty areas include (but are not limited to) couples therapy, work with children and adolescents, anxiety, depression, Attention Deficit Hyperactivity Disorder, Post Traumatic Stress Disorder and grief issues.

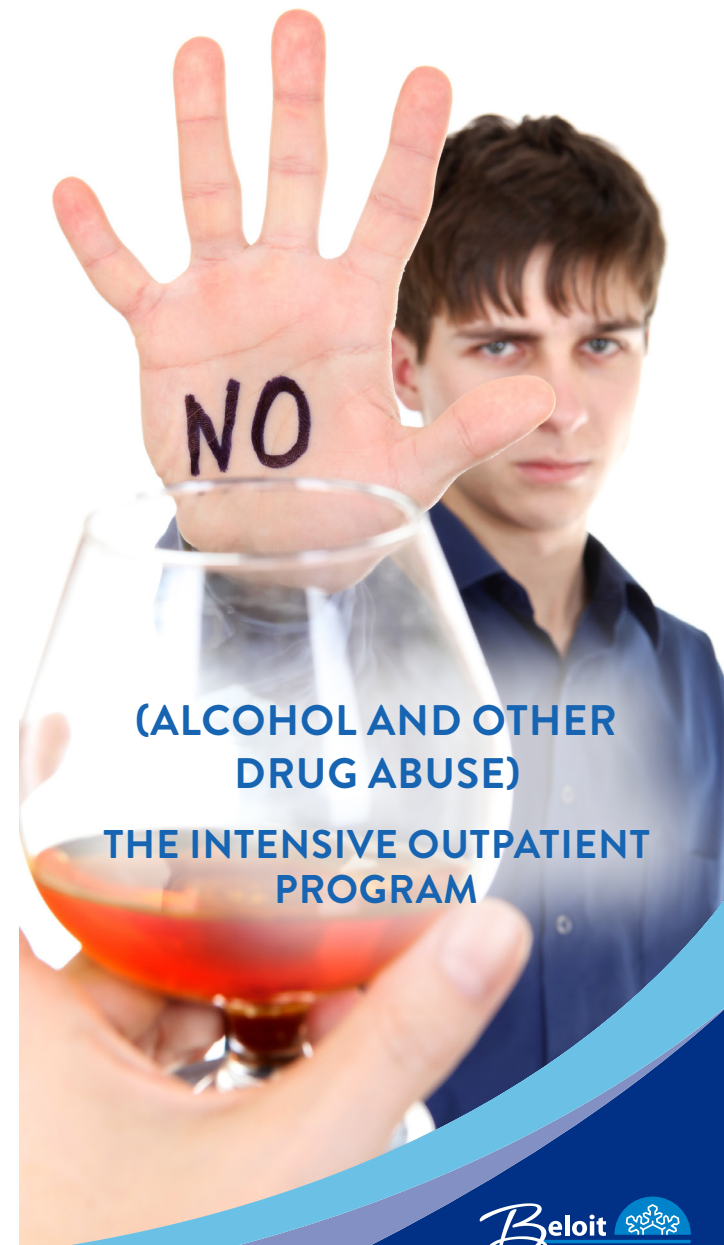
For confidential information please contact us at 608.364.5686.



1969 W. Hart Rd., Beloit, WI  
608.364.5011  
[beloithealthsystem.org](http://beloithealthsystem.org)

M/500/21

## AODA SERVICES



(ALCOHOL AND OTHER  
DRUG ABUSE)

THE INTENSIVE OUTPATIENT  
PROGRAM

## WHAT WE OFFER

The Counseling Care Center alcohol and other drug dependency treatment program is for people who don't need hospitalization. People in the early stages of alcoholism and addiction to other drugs can often be effectively treated in an outpatient setting.

The Intensive Outpatient Program helps people learn to cope with their addictions as they carry on their daily lives. The program can involve family and others who are close to the client.

Treatment center staff design treatment plans to reflect the individual needs of each client. Treatment objectives are developed which help people lead lives that are free of chemical involvement, establish or improve relationships and develop their capacity for personal growth.

People seeking treatment in the Intensive Outpatient Program are given an evaluation to determine whether

or not dependency is present and, if so, the level of care considered necessary. Those deemed treatable as outpatients may be admitted to the program.

## SCHEDULE

Clients can generally complete the program in six weeks. Continuing Care groups following primary treatment are 10–12 weeks.

## PROGRAM

A psychological evaluation may be made at the time of admission if it is considered advisable.

The treatment program consists of:

- Assessment
- Lectures
- Group Therapy
- Individual Counseling
- Continuing Care

Throughout the treatment period, the treatment center staff will maintain communication with referral sources with the approval of the client.

## REFERRAL SOURCES

Clients in the Intensive Outpatient Program are referred by several sources:

- Self
- Employers
- Physicians
- Family
- Friends
- Clergy
- Employee Assistance Program Counselors
- Court System
- Impaired Professionals Program
- Intoxicated Driver Program



## INSURANCE

Most insurance companies will approve payment for outpatient AODA treatment and counseling.

If you have any questions about coverage by your medical insurance please contact them. You may need pre-approval. If you need assistance or information from us, please let us know.

## OTHER SERVICES

The Counseling Care Center offers a broad range of services along the continuum of care for the chemical abusing or addicted person and his or her family.

Services include:

- Assessment
- Intensive Outpatient Program
- Individual Counseling
- AODA Education
- Continuing Care
- Supervision of Drug Testing

